



## T-P23 Low Voltage Cable Fault Locator

The Kehui T-P23 has been designed for the location of all types of low voltage cable fault, without the need to disconnect consumers. If a fault is suspected on an LV cable, due to a blown fuse or customer complaints, the device is connected to the cable at the substation or at an intermediate location, such as a fuse or link box. When a fault triggers the device a Time-Domain Reflectometry (TDR) test is performed on a pre-set combination of phases. A transient recorder is included to display the 3-phase voltages of the faulty cable, so that the exact nature and behaviour of intermittent faults can be identified.

In addition to its use as a TDR, quasi-synchronous Travelling Wave Fault Location can be performed using two, Kehui T-P23 units, providing two sets of results which can enhance the accuracy. The 3 phase voltage recordings from any two, or more, Kehui T-P23 units can also be used for Fault Location using the Voltage Gradient method.

The T-P23 can be controlled locally using a wirelessly connected PC or tablet. However, the device can also be remotely controlled over the GPRS network. This allows connection to a faulty cable by field staff, with the interpretation of the results provided by a centrally located specialist. This becomes particularly beneficial when the equipment has to be left on-site awaiting the re-occurrence of an intermittent fault.

### Features

- Locates all LV cable faults including transient and intermittent faults
- Measurement on live cables without disconnecting the customer
- Local Bluetooth® control from portable PC and Android phone or tablet
- Monitors all three voltage phases simultaneously
- Remote control over the internet using integral GSM/GPRS modem
- Automatic remote notification of trigger and access to records
- Self-powered from the supervised cable, through the test leads

## Specifications

### Event storage

- The last 20 triggered events
- 16 pre-trigger TDR waveforms
- 48 post-trigger TDR waveforms

### Standard Accessories

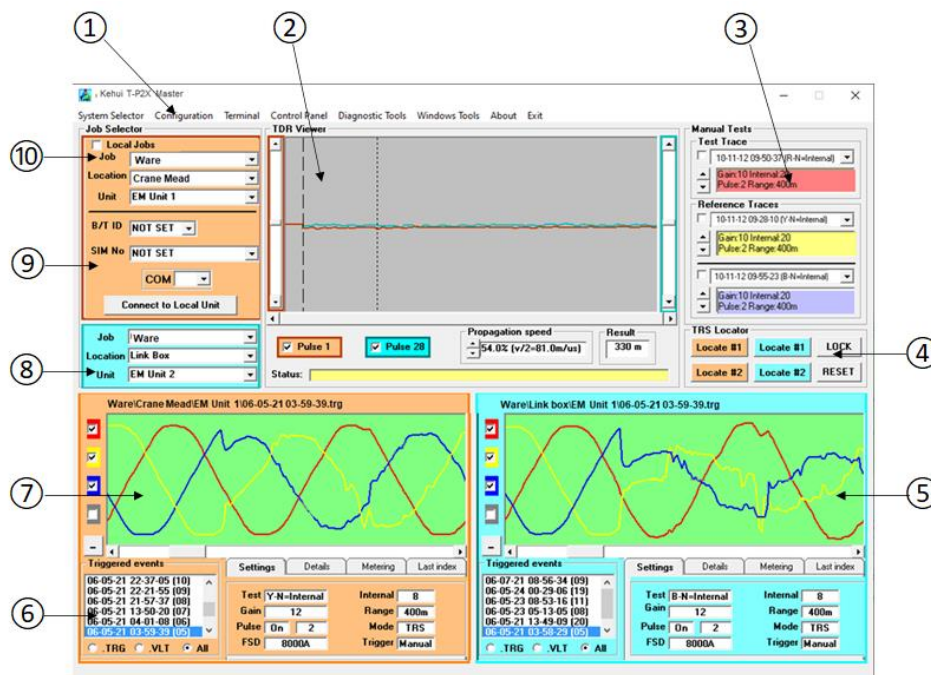
- Three-phase test lead (alternative 4mm plug and crocodile clip connection)
- Test lead with mains plug
- GSM/GPRS antenna
- T-P2X MASTER Remote control and fault location software (see below)

**Dimensions:** 240mm x 120mm x 60mm

**Weight:** 1kg

### Environmental Protection:

- ABS Housing IP65
- Connectors IP65



- |                       |                             |
|-----------------------|-----------------------------|
| ① Menu bar            | ⑥ Triggered events list     |
| ② TDR/TRS viewer      | ⑦ AC waveform viewer        |
| ③ Manual test records | ⑧ Second unit selector      |
| ④ TRS Locator         | ⑨ Unit and Comport selector |
| ⑤ Second event viewer | ⑩ Job selector              |

## Optional Accessories

- Set of four G-Clamps for alternative busbar connection
- Marker Unit (T-MU1) for calibration by triggering the system from a known location
- Pre-programmed controller (Tablet) for local control
- Selection of fuse mounts and link-box lids to provide connection for 4mm plugs

Kehui International Ltd

2 Centrus,  
Mead Lane, Hertford, Hertfordshire,  
SG13 7GX, United Kingdom

Tel: +44 (0) 1920 358990  
Email: info@kehui.com  
Website: www.kehui.com